



Just Listed

Offered at \$649,999

ELEGANT ENGLISH TUDOR IN TUALATIN

**10328 SW Whitebark Ln
Tualatin, OR 97062**

Escape to your new happy place in this open and bright home in the coveted Victoria Gardens neighborhood. Entertain and relax year round in your picturesque backyard with new professionally paved landscaping & executive hot tub (\$125k). You'll find a granite chef's kitchen with island seating, walk-in pantry, luxurious owner's suite with soaking tub & walk-in closet, large bedrooms, high ceilings, attic storage and a rare 3 car garage. With friendly faces, peace and privacy, this community has it all and just minutes from everything Tualatin has to offer!

This information is deemed reliable, but not guaranteed.



NOELLE CRADDOCK
Licensed Realtor in Oregon

503.805.4278
noelle@noellecraddock.com
www.heartNhomes.net

Interior Design Services, too!



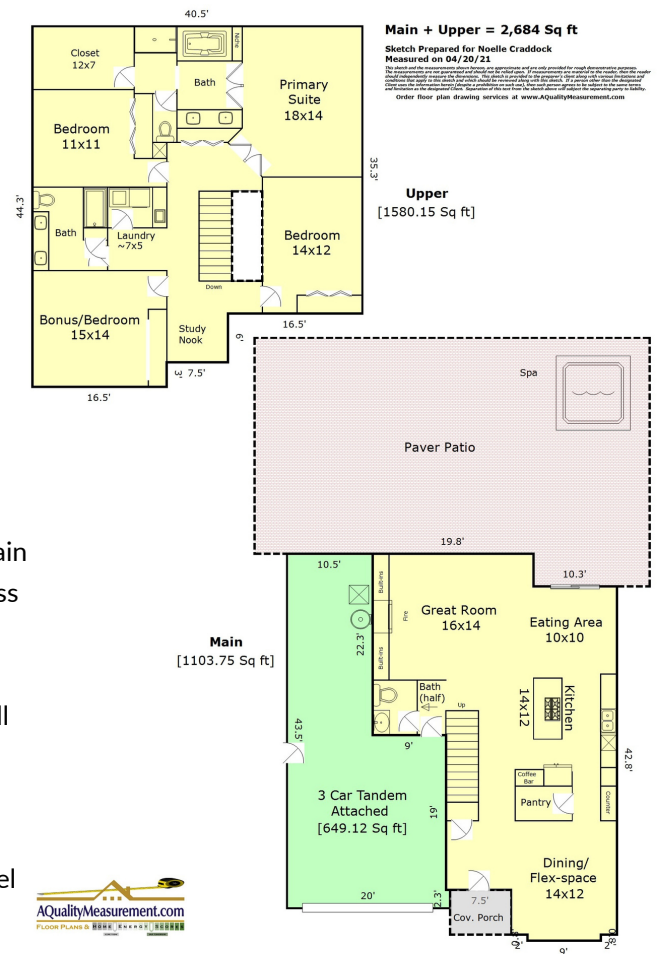
"Providing Exceptional Service From The Heart"

Soldera Properties is a boutique real estate agency with deep roots in the Pacific NW. Composed of professionals who are among the best in the industry, our firm has built a culture of excellence that is unmatched in the metro area.

NOTEWORTHY

Property Features

- Elegant English Traditional | 2,684 Square Feet | Built in 2011
- 2 Level | Open Concept | 4 Bedrooms & 2.5 Baths
- Beautiful Open Stairwell with Wrought Iron Railings
- Hardwood Floors & Custom Finish Work Throughout
- Light & Bright with High Ceilings and Large Picture Windows
- Formal Dining Room with Wainscoting or Flex Space for Multi-Purposes
- Popular Great Room Design with Gas Fireplace & Custom Built-Ins
- Gourmet Kitchen with Stainless Steel Appliances & Butler's Pantry
- Chef's Island with Eating Bar | Walk-In Pantry | Lap Top Station
- Nook with Sliding Glass Door Access to Patio with Gas BBQ Hook-Up
- Spacious Primary Bedroom Suite with Coved Ceiling & Serene View
- Dual Vanities | Soaking Tub | Shower | Private Toilet | Walk-In Closet
- Landing Area for Sitting or Study Nook | Oversized Bedrooms
- Convenient Upstairs Laundry Room w/Sink & Cabinetry | Safety Floor Drain
- 3 Car Garage with Benches & Cabinetry | Storage Racks | Man Door Access
- Large Attic Space (10x20 approx) for Additional Storage with Lighting
- Forced Air Gas Furnace | Gas Water Heater | Central Air Conditioning
- Built In Vacuum w/Hide-A-Hose Upgrade | Bose Speakers | Ring Door Bell
- Professionally Hardscaped Paver Patio & Premium Retaining Wall System
- Entertainer's Delight with Premier Hot Tub & Huge Gathering Space for Outdoor Grilling & Dining and for Hanging Out with Family & Friends
- Extensive Sprinkler & Drip System | Fully Fenced with Access Gate & Panel
- Special Designated Pet Area | Easy Garbage Bin Storage & Access
- Lovely Level Lot w/Neighboring Acreage Behind Property for Extra Privacy
- Quiet Street | Minimal Traffic | Friendly Neighborhood
- Desirable Upscale Location with Top Rated Tualatin Schools
- Conveniently Located Near Walking Trails & Community Parks
- Easy Access to 1-5, Shopping, Restaurants & Meridian Park Hospital
- Byrom Elementary, Hazelbrook MS & Tualatin HS
- MLS# 21158047



View Property Webpage



Scan to View Virtual Tour

COME VISIT YOUR DREAM HOME TODAY!

