



LOVELY SINGLE LEVEL IN SUMMERPLACE



2038 NE 158TH PLACE | PORTLAND, OR 97230

\$399,900

- 1,702 TOTAL SQ FT
- 2 BEDS | 2 BATHS
- 1 LEVEL
- BUILT IN 1992
- GAS FIREPLACE
- COVERED PATIO
- 2 CAR GARAGE
- SUMMERPLACE AMENITIES

Now's your chance to live in the highly desirable Summerplace community! Come see everything this beautiful & well-maintained single level home has to offer & you won't want to leave!! Property features include: New neutral paint throughout, granite counters, stainless steel appliances, gas fireplace, plantation shutters & much more! Extend your living to the covered patio area while a low maintenance yard allows you the freedom to enjoy all the wonderful amenities included in this 55+ community! www.summerplacehoa.com

**"PROVIDING
EXCEPTIONAL
SERVICE FROM
THE HEART"**

This information is deemed reliable, but not guaranteed.

Soldera Properties is a boutique real estate agency with deep roots in the Pacific NW. Composed of professionals who are among the best in the industry, our firm has built a culture of excellence that is unmatched in the metro area.

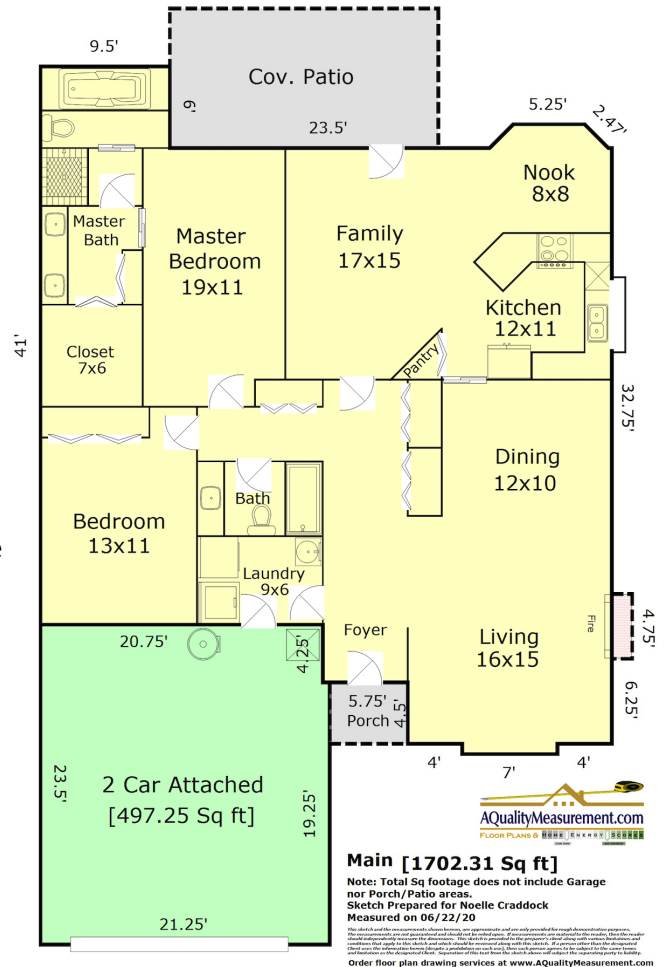
Noelle Craddock
Licensed Realtor in Oregon
GRI, ABR, SRS, PSA
503.805.4278
noelle@noellecraddock.com
www.heartNhomes.net



SOLDERA PROPERTIES, INC. | 4260 SW GALEWOOD ST STE B | LAKE OSWEGO, OR 97035

2038 NE 158TH PLACE | PORTLAND, OR 97230

- 1 Level Floor Plan | 1,702 Total Square Feet
- 2 Bedrooms | 2 Baths
- Tile Entry & Plentiful Hallway Storage
- Fresh Neutral Paint Throughout
- Formal Dining & Living Room w/Gas Fireplace
- Kitchen w/Granite Counters & Oak Cabinetry
- Stainless Steel Appliances | Garden Window
- Breakfast Nook | Bay Window | Ceiling Fan
- Spacious Family Room | French Door Entry
- Hall Bath w/Granite Counter & Undermount Sink
- Guest Room or Office/Den | Plantation Shutters
- Master Suite | Plantation Shutters | Ceiling Fan
- Granite Counter Vanity & Dual Undermount Sinks
- Separate Shower w/Skylight | Large Soaking Tub
- Walk-In Closet w/Built-Ins
- Laundry Room | Utility Sink | Cabinetry For Storage
- Gas Furnace & Central AC | Gas Water Heater
- Charming Covered Patio Area w/Patio Lights
- Low-Maintenance Yard | Arbor | Fully Fenced
- Two Car Garage w/Shelving for Storage
- Overhead Attic Space w/Pull Down Stair Access
- Quiet Street & Minimal Traffic
- Bike & Pet Friendly Neighborhood
- Signature Summerplace Amenities
- Renowned Glendoveer Golf Course Nearby
- Easy Access To Freeway
- Short Distance To Portland Airport
- MLS #20160956



PROPERTY FEATURES

